



EAGLE PARK SCHOOL NEWSLETTER 26

Friday 3rd May 2024

Summer Term 2024

Dear Parents, Carers and Students,

This week has been another very busy week for all our students with Phoenix working on some amazing mosaics as part of their project on Ancient Greece. We were all astounded at how much they learnt about the mosaics of the past and the beautiful designs they created. Two of our students created images of owls as they were the sacred emblem of the goddess Athena and represented learning and wisdom. Well done Marcus and Lily for your great work.

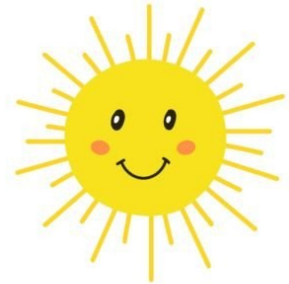
The International School of London visited us this week to begin our partnership. Their students and ours will be working together on different projects from this term on and into the future. We are all so excited to be welcoming these talented young people into our school to work with our own talented youngsters.

The weather hasn't been as good as we hoped, but, from after the Bank Holiday we will be able to get our classes out into the playing fields to start sports and practice for Sports Day. Let's hope the sun finally comes out for us all.

We wish you all a very happy long weekend.

Margaret Carey

Headteacher.



Summer Term starts:	Monday 15th April (Staff Inset day) – Wednesday 24th July
Half Term :	Monday 27th May –Friday 31st May

Class News

Crane Class



Crane Class have been engaged in the act of reading the book titled The Very Hungry Caterpillar. Pupils have been arranging the story in a specific order and acquiring the terminology in our reading and writing literacy lessons. In addition, we have begun to learn the concept 'how many altogether' in our mathematics interactive sessions. In order to aid us, we use our dual-sided counters and tens frames. Initially, this task presented a challenge due to its novelty. However, with persistent effort, we have now begun to ascertain the correct quantity. During our life skills cooking lessons, we have been enhancing our fine and gross motor abilities as well as refining our sense of taste. Pupils have been preparing a fruit salad to aid in the nourishment and development of our sensory tale caterpillar.



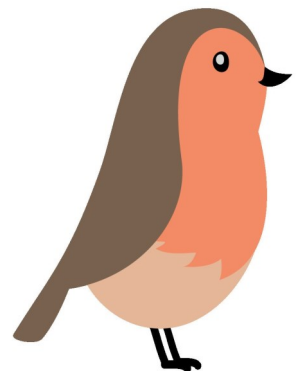
Class News

Robin Class



Robin class has had a fantastic week. We have enjoyed exploring horticultural learning, caring for our plants, learning the life cycle of the plant, and in art creating May flowers. In Literacy we have been super creative making our magazine front covers and choosing the topic we will be exploring. We have been working together as a team during phonics, participating in whole class and small group activities and have loved class spelling tests! Some of us have been continuing our times tables and we have loved playing interactive group games to consolidate our learning.

Robin class has made fantastic progress in swimming, we are confident in the water and beginning to swim independently. Amazing!



Class News

Dove Class



We had a truly wonderful week with Dove class! It was both incredibly educational and heaps of fun for all involved. One of the highlights was celebrating a birthday together in our class, which brought an extra element of joy and camaraderie to our days. Throughout the week, our students delved deeper into understanding themselves and their emotions, a vital aspect of personal growth and social development. During our sessions on SLT (Speech and Language Therapy), the students explored various emotions and learned to identify corresponding facial expressions. This was not only informative but also helped foster empathy and emotional intelligence among the group.

In literacy, the students engaged in lively brainstorming sessions where they shared and wrote about their favourite movies, books, and more. They crafted detailed summaries of their cherished books and even ventured into creating their own imaginative stories, showcasing their blossoming creativity and storytelling skills. In numeracy, the focus remained on fractions, a concept that requires patience and practice. Our students are steadily building their understanding and confidence in working with fractions, which is commendable progress. In the realm of art, the students channelled their excitement for May and the vibrant colours of spring into creating beautiful artworks. Their pieces not only adorned our classroom but also served as expressions of their unique perspectives and artistic talents. Moreover, the students honed their fine motor skills by engaging in hands-on activities such as building with Lego and solving intricate puzzles. These activities not only provided enjoyable challenges but also contributed to their overall problem-solving abilities.

I want to extend a heartfelt congratulations to everyone for their hard work and positive attitudes throughout the week. The smiles and enthusiasm were contagious, making it a truly delightful experience for all of us. Wishing everyone a restful and enjoyable weekend ahead!



Class News

Goldfinch



This week Goldfinch has been working on looking at how Spring is changing the world around us and we went to the park to see all of this first hand. We had a fantastic time. We all enjoyed swimming on Tuesday and Joe phoned the school to say what great progress we are all making.

We are reading *The Very Hungry Caterpillar* and we are going to look for caterpillars next week. That will be so exciting.

In Maths we are working on Number and number bonds and making a lot of progress. Maybe we will count all the caterpillars we see at the park next week. That would be wonderful!..



Class News

Phoenix



This week we have continued to explore Ancient Greece in our lessons. In Art we finished our mosaics which were inspired by Greek mythology and in Humanities we started to research how the Ancient Greeks lived. In English we have been reading some of Aesop's fables and continued writing our own Greek myths. In Maths we finished looking at decimals and have recapped telling the time using an analogue clock and started to read the time on a 24 hour clock.

In Food Technology we made chocolate chip banana bread cupcakes which were very popular when it came to tasting what we had made!

EAGLE PARK SCHOOL NEWSLETTER

Students are nominated weekly for a
class award.



This week's EPS Eagle:



Crane: Kevin

"Kevin has been communicating verbally with staff members"

Goldfinch: Ari

"for working so hard this week during circle time and doing all his TEACCH activities. Congratulations, Ari!"

Robin: Hallie

"for swimming half of the length of the swimming pool independently!"

Dove: Bareerah

"for doing her best with working on fractions"

Phoenix: Lilly

"for her effort creating a mosaic in Art."



*Just a
reminder...*



Swimming is on Thursdays.

Please remember to pack a swimming costume and towel in a swim bag.

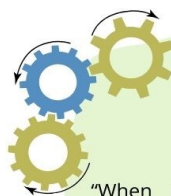
EAGLE PARK SCHOOL

NEWSLETTER-Therapy Page

HOW TO SUPPORT AUDITORY SENSITIVITY IN THE CLASSROOM



OCCUPATIONAL THERAPY



Sensory tools - Auditory activities

"When it comes to children, **play is considered their primary occupation**. Through play, pupils develop social communication skills, motor skills and developmental skills. Sensory tools are one of them. These tools provide sensory input that is calming, alerting or both. **Sensory tools can be in the form of visual, auditory, gustatory, smell or even movement.**" -OT toolbox

4 Auditory activities

- Improves **sensory regulation** (auditory seeking and sensitivity)
- Improves **auditory processing**
- Improves **work behaviours** such as: impulse control, compliance, frustration tolerance and attention span and concentration.
- Improves **cognitive concepts**: use of animal sounds, stories etc.
- Improves **motor skills and coordination** by using musical instruments
- Improves **emotional regulation**
- Improves **play participation**: Sensorimotor play
- *Examples: The use of toy musical instruments (rattles, tambourines, drums, and bells), whistles, bubble wraps, ear defenders, calming and relaxing yoga music, auditory books, and auditory stuff toys*

Perspective taking

The aim of perspective taking is for an individual to be able to gain insights into the **reasons behind people's thoughts, actions and words** through observing **contextual clues and the verbal and non-verbal language of others**.

Home tips

- **Acknowledge and validate your child's feelings.** e.g., If your child is upset about not being able to go to the park, respond with empathy, *"It sounds like you're really hurt by this"*.
- **Avoid exploring others' perspectives when your child is upset or anxious.** Wait until they are in a calmer, more regulated state.
- **Share your own thought process out loud** in different situations, so that your child can understand a different way of thinking. e.g., *"I'm feeling really disappointed because you're not listening to me"*
- Use stories and videos to **label the emotions of characters** and explore what they may be **thinking and feeling**.



SPEECH & LANGUAGE THERAPY

EAGLE PARK SCHOOL NEWSLETTER

EPS half-term dates 2023-2024



Eagle Park School Term and Holiday Dates Academic
Year 2023-2024

September 2023							October 2023							November 2023							December 2023							
M	T	W	T	F	S	S	M	T	W	T	F	S	S	M	T	W	T	F	S	S	M	T	W	T	F	S	S	
					1	2	3						1			1	2	3	4	5						1	2	3
4	5	6	7	8	9	10	2	3	4	5	6	7	8	6	7	8	9	10	11	12	4	5	6	7	8	9	10	
11	12	13	14	15	16	17	9	10	11	12	13	14	15	13	14	15	16	17	18	19	11	12	13	14	15	16	17	
18	19	20	21	22	23	24	16	17	18	19	20	21	22	20	21	22	23	24	25	26	18	19	20	21	22	23	24	
25	26	27	28	29	30		23	24	25	26	27	28	29	27	28	29	30				25	26	27	28	29	30	31	
							30	31																				

January 2024							February 2024							March 2024							April 2024						
M	T	W	T	F	S	S	M	T	W	T	F	S	S	M	T	W	T	F	S	S	M	T	W	T	F	S	S
1	2	3	4	5	6	7					1	2	3	4				1	2	3	1	2	3	4	5	6	7
8	9	10	11	12	13	14	5	6	7	8	9	10	11	4	5	6	7	8	9	10	8	9	10	11	12	13	14
15	16	17	18	19	20	21	12	13	14	15	16	17	18	11	12	13	14	15	16	17	15	16	17	18	19	20	21
22	23	24	25	26	27	28	19	20	21	22	23	24	25	18	19	20	21	22	23	24	22	23	24	25	26	27	28
29	30	31					26	27	28	29				25	26	27	28	29	30	31	29	30					

May 2024							June 2024							July 2024							August 2024							
M	T	W	T	F	S	S	M	T	W	T	F	S	S	M	T	W	T	F	S	S	M	T	W	T	F	S	S	
					1	2	3	4	5	6	7	8	9	1	2	3	4	5	6	7					1	2	3	4
6	7	8	9	10	11	12	3	4	5	6	7	8	9	8	9	10	11	12	13	14	5	6	7	8	9	10	11	
13	14	15	16	17	18	19	10	11	12	13	14	15	16	15	16	17	18	19	20	21	12	13	14	15	16	17	18	
20	21	22	23	24	25	26	17	18	19	20	21	22	23	22	23	24	25	26	27	28	19	20	21	22	23	24	25	
27	28	29	30	31			24	25	26	27	28	29	30	29	30	31					26	27	28	29	30	31		

= School day
 = School holidays
 = Staff inset day
 = Bank holidays
 = Weekends
 Eagle Park allocates five non-pupil days out of the school days indicated or the equivalent in disaggregated Friday afternoons or twilight sessions.

EPS half-term dates 2024-2025



Eagle Park School Term and Holiday Dates
Academic Year 2024-2025

September 2024							October 2024							November 2024							December 2024						
M	T	W	T	F	S	S	M	T	W	T	F	S	S	M	T	W	T	F	S	S	M	T	W	T	F	S	S
2	3	4	5	6	7	8	7	8	9	10	11	12	13	4	5	6	7	8	9	10	2	3	4	5	6	7	8
9	10	11	12	13	14	15	14	15	16	17	18	19	20	11	12	13	14	15	16	17	9	10	11	12	13	14	15
16	17	18	19	20	21	22	21	22	23	24	25	26	27	18	19	20	21	22	23	24	16	17	18	19	20	21	22
23	24	25	26	27	28	29	28	29	30	31				25	26	27	28	29	30		23	24	25	26	27	28	29
30																					30	31					

January 2025							February 2025							March 2025							April 2025						
M	T	W	T	F	S	S	M	T	W	T	F	S	S	M	T	W	T	F	S	S	M	T	W	T	F	S	S
6	7	8	9	10	11	12	3	4	5	6	7	8	9	3	4	5	6	7	8	9	7	8	9	10	11	12	13
13	14	15	16	17	18	19	10	11	12	13	14	15	16	10	11	12	13	14	15	16	14	15	16	17	18	19	20
20	21	22	23	24	25	26	17	18	19	20	21	22	23	17	18	19	20	21	22	23	21	22	23	24	25	26	27
27	28	29	30	31			24	25	26	27	28			24	25	26	27	28	29	30	28	29	30				

May 2025							June 2025							July 2025							August 2025						
M	T	W	T	F	S	S	M	T	W	T	F	S	S	M	T	W	T	F	S	S	M	T	W	T	F	S	S
5	6	7	8	9	10	11	2	3	4	5	6	7	8	7	8	9	10	11	12	13	4	5	6	7	8	9	10
12	13	14	15	16	17	18	9	10	11	12	13	14	15	14	15	16	17	18	19	20	11	12	13	14	15	16	17
19	20	21	22	23	24	25	16	17	18	19	20	21	22	21	22	23	24	25	26	27	18	19	20	21	22	23	24
26	27	28	29	30	31		23	24	25	26	27	28	29	28	29	30	31				25	26	27	28	29	30	31

= School day
 = School holidays
 = Staff inset day
 = Bank holidays
 = Weekends
 Eagle Park allocates five non-pupil days.